

In the **final part** of this article series, we take a closer look at **on-premise solutions**.

Although the general trend clearly points toward **cloud services**, **traditional solutions** remain widely used within the **SAP ecosystem**.

The boundaries, however, are **fluid** — alongside the two solutions presented in this article, there are also **on-premise variants** of products such as **Omada** and **IBM Security Verify** (introduced in Part 3).

Conversely, **One Identity** has long since moved beyond the purely classical approach of installing software exclusively on in-house servers.

As this series hopefully illustrates, companies today are truly **spoiled for choice**. Each solution discussed has its **strengths and weaknesses**, and has thus carved out its own **niche in the market**.

Please also note that the assessments provided here are **not final** and **do not replace individual consulting**.

For the product selection process, **consiness** offers a **predefined evaluation matrix**, which will be discussed at the **end of this article**.

---

## Overview of the Series

- [Part 1: The End of an Era – The Future After SAP IDM](#)
- [Part 2: SAP – Cloud Identity Services, GRC Edition for SAP HANA](#)
- [Part 3: Cloud Services](#)
- **Part 4:** On-Premise Solutions – e.g. One Identity, SIVIS

---

## Structure of This Article

- **Option A:** SIVIS
  - **Option B:** One Identity by Quest
  - **Our Offer:** The consiness Product Evaluation
-

## Option A: SIVIS

**SIVIS** is a product that will immediately appeal to **experienced administrators** in **identity and authorization management**.

Developed by the **Karlsruhe-based company of the same name**, it is proudly **“made in Germany.”**

From our perspective, this represents a **significant advantage**, as the **challenges of SAP-centric environments** are particularly well understood within the **DACH region**.

It therefore comes as no surprise that **SIVIS** is an **ABAP-based solution**, offering an **enhanced structure** built upon **classic SU01 user accounts** and **PFCG roles**. This positions **SIVIS** more or less in **direct competition** with SAP's own **GRC product line**.

The **feature set** of SIVIS has clearly evolved from the **day-to-day requirements** of **identity and access management** in **complex SAP landscapes**.

Accordingly, SIVIS is delivered with its own **risk analysis engine** for **object-level evaluation** of SAP authorizations.

It can also **fully replace SAP's widely used Privileged Access Management solution (SAP GRC Firefighter)**, eliminating in most cases the need for **third-party integration**.

## The End of an Era – Part 4/4: On-Premise Solutions



Accessing SIVIS via the SAP GUI

The **aging Dynpro interfaces** of **ABAP** are enhanced in **SIVIS** with a **visually appealing, modern UI**.

In the following example, a **role assignment** is shown that is based on **workplace roles** and can **immediately flag potential issues** using the **integrated risk engine**.

These workplace roles are **not limited to SAP ABAP-based authorizations** — they can be **integrated with virtually any application** through **over 4,000 available connectors**.

This includes classic integrations such as **SAP BI, HCM, Active Directory**, and various **cloud applications**.

## The End of an Era – Part 4/4: On-Premise Solutions

**SIVIS** Assign authorization

Wizard / Assign authorization

2 Details identity New audit problems: 5

**GENERAL** ^ ...

First name Astrid Valid from 05.09.2013 Valid to 31.12.2013

Last name Briese

3 Job selection

Search  Filter

**ASSIGNED** ^ ...

STATUS	DESTINATION SYSTEMS	IDENTITY	FULL NAME	JOB	DESCRIPTION	VALID FROM	VALID TO	TEMPLATE	SUMMARY
<input type="checkbox"/>		ABRIESE	Astrid Briese	SIAM01_CO_CC_RESPONSIBLE_EU	SIAM Cost Center Responsible ALL	30.09.2013	31.12.2013	<input checked="" type="checkbox"/>	
<input type="checkbox"/>		ABRIESE	Astrid Briese	SIAM01_FI_AP_ACCOUNTANT_EU	SIAM Accounts Payable Accountant ALL	30.09.2013	31.12.2013	<input checked="" type="checkbox"/>	
<input type="checkbox"/>		ABRIESE	Astrid Briese	SIAM01_FI_AR_ACCOUNTANT_EU	SIAM Accounts Receivable Accountant ALL	30.09.2013	31.12.2013	<input checked="" type="checkbox"/>	

Entries 1 - 3 of 3  Rows First < Previous 1 Next > Last

Assign jobs Remove jobs

7.7.1 Cancel < Back Create change request > Select change request > Overview

Assignment of authorizations in the custom UI

A particularly **positive aspect** to highlight is that the **rule sets for critical authorizations and segregation-of-duties conflicts** are presented not only **from a technical perspective**, but also in a **business-oriented and detailed manner**.

This makes the solution **suitable for business departments** as well, especially for those acting in the role of **risk owners**.

## The End of an Era – Part 4/4: On-Premise Solutions

**Assign authorization**

New audit problems: 5

Astrid Briese      Valid from: 05.09.2013      Valid to: 31.12.2013

**AUDIT PROBLEMS DETECTED**

The following audit problems result from the changed assignments.

Query	Risk	Description
6734	Very high	AR enter credit memo (org) & AR clear balance (org)
6739	Very high	AR payments (org) & AR edit invoice (org)
6743	Very high	Reconcile bank / post with balance sheet payments (org)
6744	Very high	AR enter credit memo (org) & AR clear balance (org)
6784	Very high	Reconcile bank / post with balance sheet invoices (org)

**Query: 6734**

A user can post a credit memo for a customer in accounting and clear the customer balance at the same time. Entering account receivable credit memo is performed directly in the module FI without reference to a salesdocument. This credit memo posting can be linked to an initial customer invoice to justify a partial delivery of services or goods for example. Account receivable clearing allows to balance several accounting documents for one customer if the amounts in debit and credit correspond. Then an account receivable credit memo can be balanced with one or several account receivable invoices for one customer.

**Risk:**

The risk is to create an account receivable credit memo and clear the customer balance to cancel customer's obligation. Indeed, the customer invoices which should be paid could be balanced manually with a customer credit memo. Then the company would not expect a payment for the initial account receivable invoice. This may cause a loss of revenue and a loss of cash for the company.

Risk analysis with non-technical explanations

**SIVIS** is generally offered in **four different editions**, which vary in terms of **functionality** and **connectivity**.

The **price of the solution** is determined primarily by the **selected feature set** and the **number of managed identities**.

Although **no specific pricing information** is provided on the website, it can be assumed that **SIVIS is priced below a comparable SAP solution**.

Standard	Advanced	Professional	Ultimate
----------	----------	--------------	----------

### Grundlegende Identitätskontrolle

Unsere Standard Edition bietet Ihnen eine Vielzahl an Funktionen:

Microsoft Plattform	
Administrationsoberfläche	✓
Identity Management - Basic	✓
Connector (AD/AAD, SAP, Mail)	✓

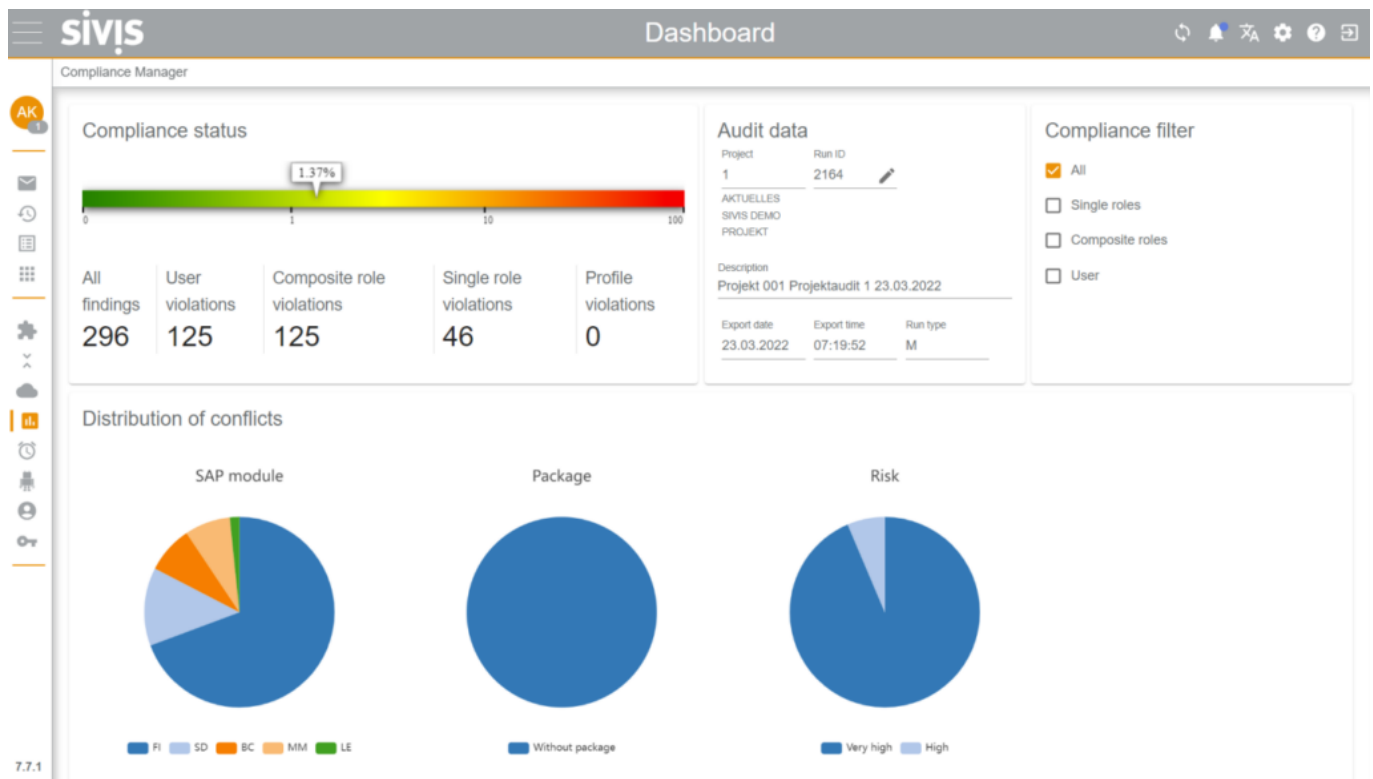
  

SAP-Umgebung	
Administrationsoberfläche	✓
Identity Management - Basic	✓
Connector (AD/AAD, SAP, Mail)	✓

#### SIVIS Editions at a Glance

Finally, let's take a look at the **Compliance Manager dashboard**, which is designed to **clearly and management-friendly** display the **status of audit-relevant authorizations**.

For **authorization managers**, this dashboard also serves as the **primary point of entry** for **resolving or mitigating issues** within the authorization concept.



Compliance Manager in action

### Advantages

- SAP-focused solution from a **highly specialized IAM vendor**
- Supports **both Microsoft and SAP platforms**
- **Close customer relationships** with **direct access to the manufacturer**
- **More attractive pricing model** compared to SAP's own solutions
- **Integrated risk analysis engine** capable of evaluating down to the **SAP ABAP object level**
- **Built-in Privileged Access Management (PAM)** solution

### Disadvantages

- **No Fiori-based interfaces** for SAP
- **Relatively small vendor** compared to larger competitors

### Assessment

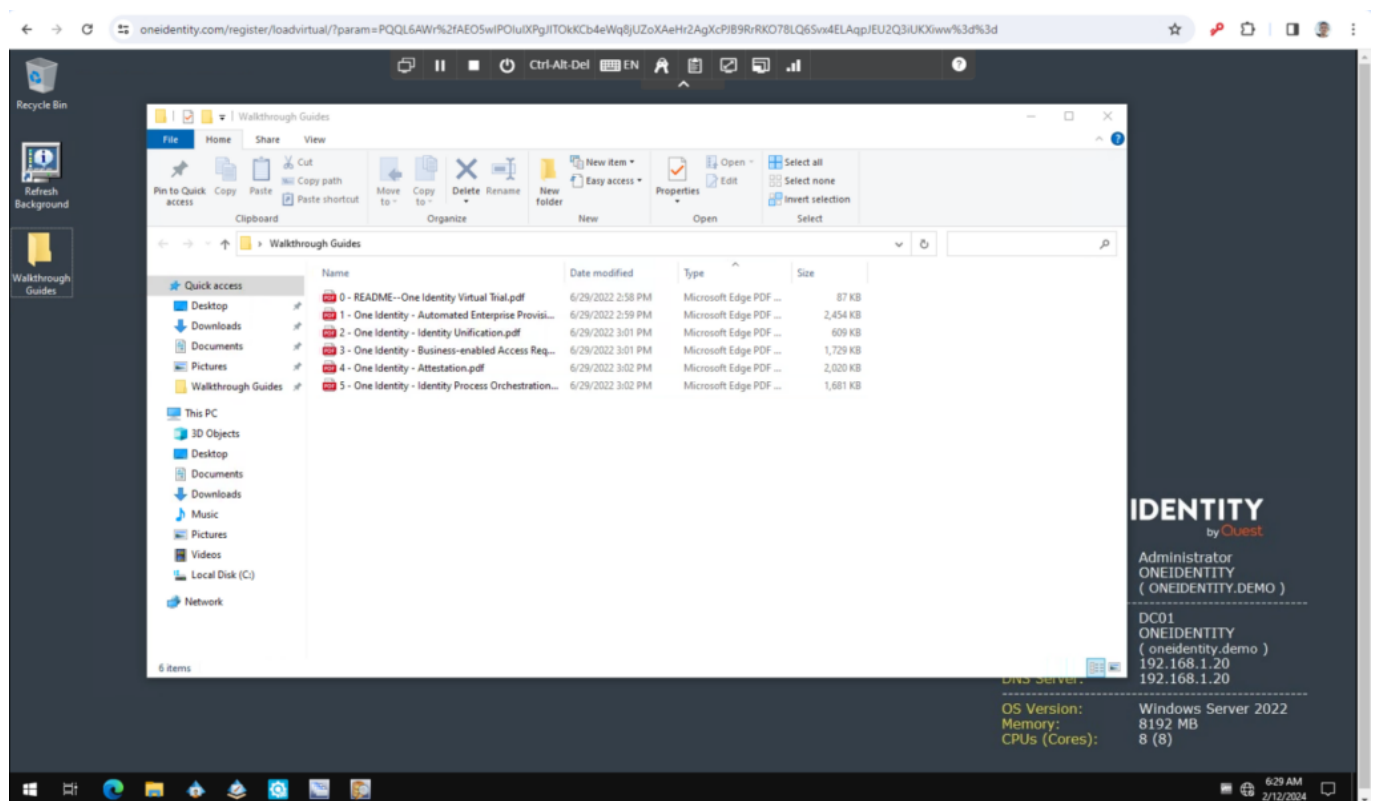
We first became aware of **SIVIS** through a project with one of our partners at a major enterprise customer.

During a **demonstration**, we were able to **evaluate the solution** against some of the **very specific requirements** of one of our existing IDM clients.

Among all the options presented in this article series, **none achieved such a high match rate and level of “out-of-the-box” support.**

While many other solutions rely on **third-party integrations** for aspects like **extensibility, PAM, authorization risk analysis, and specialized SAP provisioning scenarios**, **SIVIS** can address **all of these requirements natively**. Combined with its **straightforward and goal-oriented architecture**, it's no surprise that customers **choose SIVIS for the long term**.

We can therefore give a **clear recommendation** for **highly complex, SAP-centric architectures**.

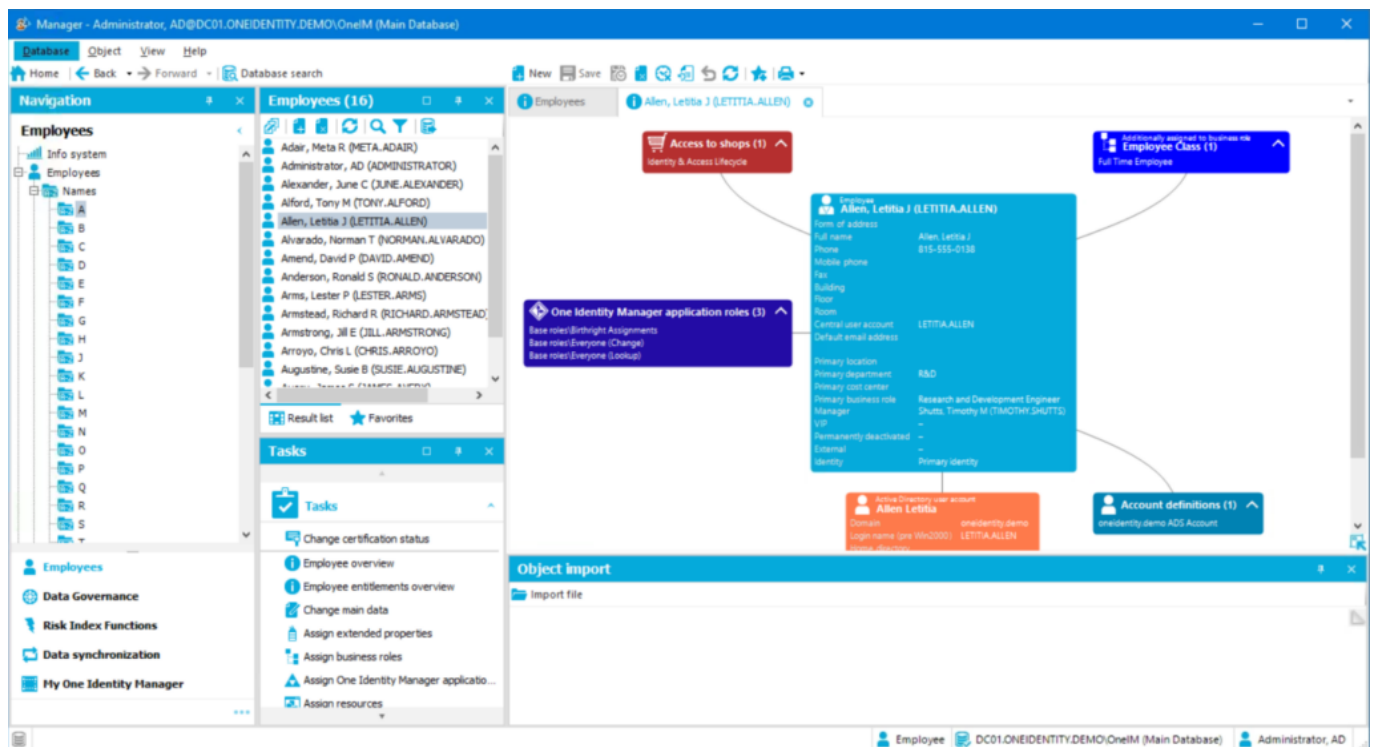


Trial version available as a virtual desktop in the browser



Right after logging in, users immediately get a sense of **what kind of solution they're dealing with**: there are **five main applications** that can be accessed directly — the **Manager**, **Designer**, **Synchronization Editor**, **Object Browser**, and **Job Queue Info**.

The **technology stack** is based on **.NET**, providing **virtually unlimited possibilities** for **customization** and **custom development**.



Viewing an identity in the Manager application

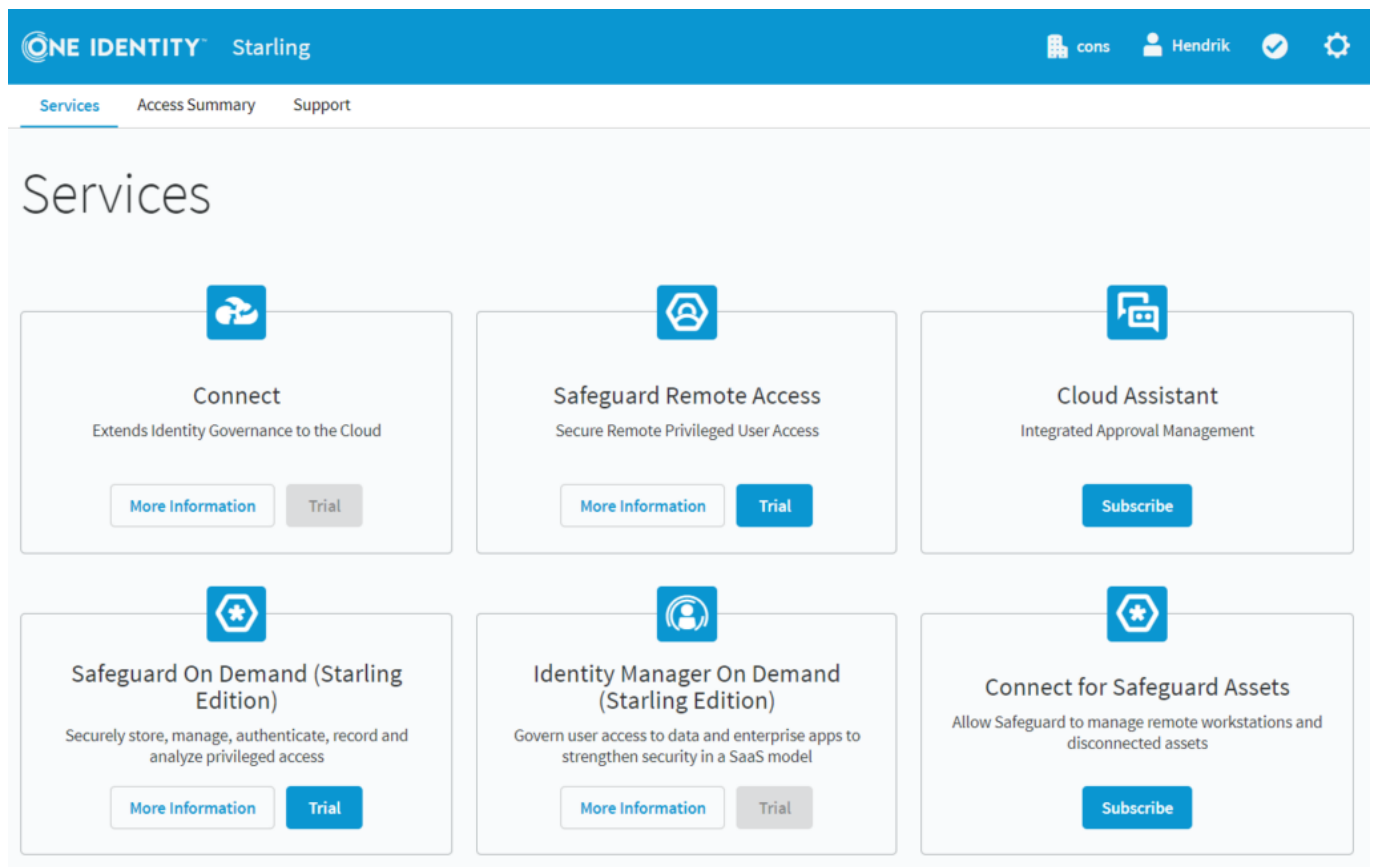
We consider the **interfaces of the classic edition** to be somewhat **dated**, yet still **highly functional**.

In the **Manager**, users can **look up individuals** much like in a **telephone directory** and receive a **graphical overview** of identity data, access rights, and permissions.

Key functions, such as **assigning new privileges**, are just **one click away**.

A look at **One Identity Starling** reveals that **service- and cloud-based identity services** are being rolled out in a **much more contemporary design**.

## The End of an Era – Part 4/4: On-Premise Solutions

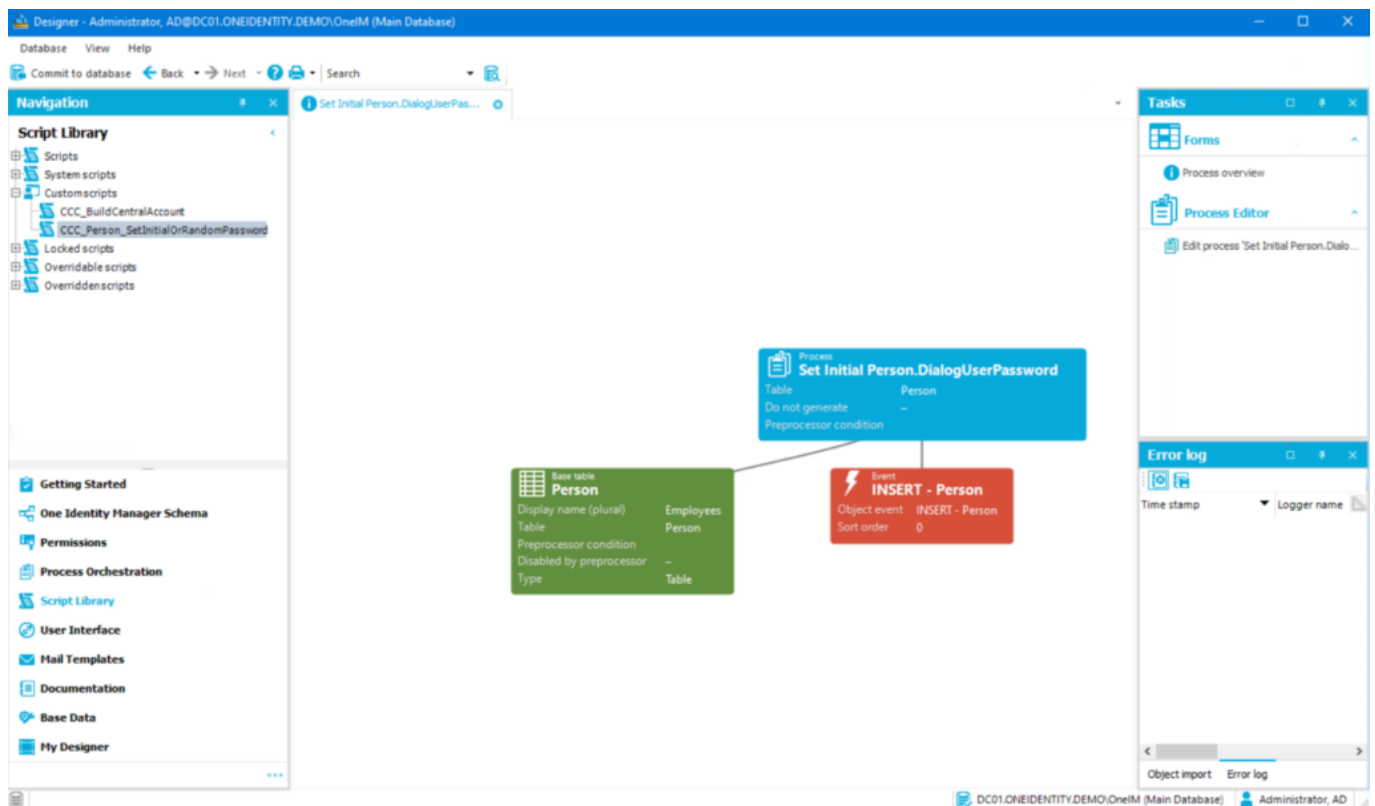


One Identity Starling incl. On Demand Identity Manager

To provide a further impression of the **customization capabilities**, we'll now showcase the options for **maintaining scripts, connectors, and synchronization scenarios**.

The **script editor** is integrated into the system with a **graphical interface**, allowing **interfaces and relationships** to be **visualized directly**.

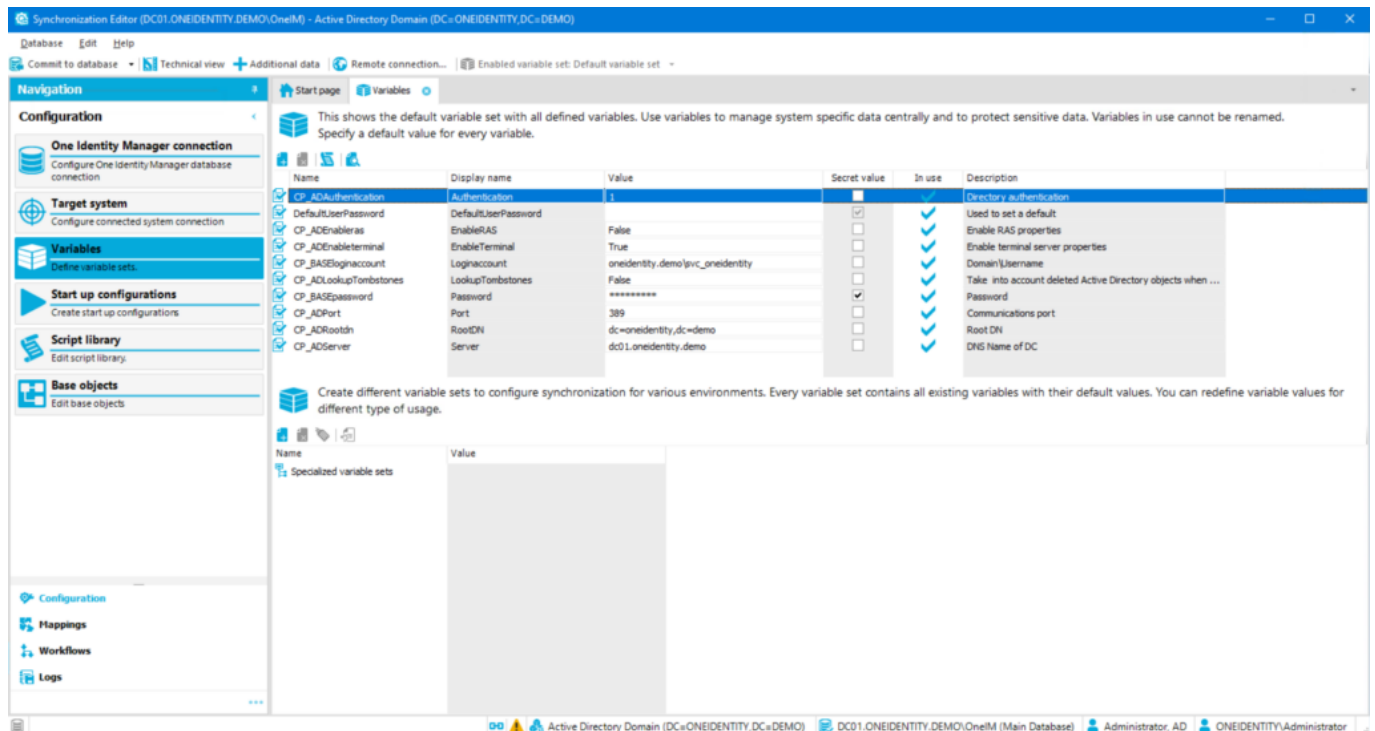
## The End of an Era – Part 4/4: On-Premise Solutions



Designer with Script Library

From our perspective, one of the **major advantages of SAP software (and SAP IDM in particular)** has always been its ability to **accommodate highly complex scenarios and customer-specific requirements through customization**. Without judging whether a return to **standardized processes** might sometimes be the better option, **One Identity** should ensure that **no requirements remain unsolvable due to technical limitations**.

## The End of an Era – Part 4/4: On-Premise Solutions



### Advanced Synchronization Editor

To get familiar with the **world of One Identity**, the **One Identity University** is prominently featured.

Depending on the required profile, **training courses** of varying **scope** and **technical depth** can be booked.

For service providers, onboarding can easily involve **a full month of training**. This **competitive advantage**—along with the distinctive **“moat”** created by certified One Identity specialists—will likely feel familiar to **seasoned SAP consultants**.

When it comes to **pricing**, Quest unfortunately does not provide **public information**.

However, based on experience from our network, pricing appears to be **roughly comparable to SAP licensing levels**, though this can **vary significantly between customers**.

## Advantages

- Established **market-leading solution**
  - **Maximum flexibility and complexity**, strongly reminiscent of SAP IDM
  - **Cloud deployment** also possible
  - **Extensive documentation** and a **clear training path** through the One Identity University
- 

## Disadvantages

- **Complex architecture**
  - **Comprehensive training** required for administrators and developers
  - **SAP-specific scenarios** such as **PAM** and **risk analysis** require **integration with SAP GRC**
- 

## Assessment

As mentioned in the introduction, **One Identity** offers **countless possibilities** for building a **tailor-made IAM solution**— which can be either **a blessing or a curse** for potential customers.

Often, it's only **after implementation** that companies realize their **unique requirements and details**.

With **One Identity**, virtually **any imaginable scenario** can be realized **using built-in tools**.

We therefore see **One Identity** as the solution that **most closely resembles SAP Identity Management**, offering **similar flexibility**.

However, the key differences lie in the fact that **One Identity** provides **many more out-of-the-box features**, boasts a **larger customer base**, and has a **much longer history** in the IAM market.

Moreover, **Quest continues to innovate**, now offering the solution **as a cloud service** as well.

From our perspective, it's easy to see **why One Identity is the market leader**. The only drawbacks are its **high complexity** and the fact that **SAP integration**

**scenarios** have **never been a primary focus** for this **internationally operating company**.

## Our Offer: The consiness Product Evaluation

**consiness** offers a **specialized product evaluation** for **Identity and Access Governance (IAG) solutions**, tailored to the **individual circumstances** of each client.

We apply a **structured methodology** to systematically **analyze the available options** and identify the **best-fit solution** for your organization.

[illegible]

# consiness Product Evaluation Matrix

### Scoring:

Weighted evaluation of solutions based on their **product features** and **framework conditions**.

## Cost Overview:

Rough calculation of **operational** and **investment costs** for a given solution over a **10-year period**.

## Roadmap:

A **model project plan** outlining the **implementation timeline** for the new solution.

## Decision:

Comprehensive documentation of a **justifiable and transparent decision** for presentation to **stakeholders**.

---

The **methodology** presented supports organizations in making **well-informed decisions** — whether during the **initial selection** of an IGA solution or when **reviewing existing choices**.

In this way, we ensure that the **selected solutions** optimally meet the **defined requirements** and are **future-proof**.

A more detailed insight into the **consiness Product Evaluation** will be published soon on **LinkedIn**.

---

## Summary

With this article, we conclude our **four-part series**, in which we presented a variety of available options.

Each of these solutions occupies its own **niche** and **justification**, addressing **different requirements and preferences**.

Despite the detailed overview provided, a **precise product evaluation** tailored to **individual customer needs** cannot be replaced.

It remains essential to **carefully analyze your specific requirements and expectations** in order to select the **optimal solution** for your organization.

Of course, there are many other solutions that did not make it into this series — we plan to **cover additional ones** in future articles.

In conclusion, we hope that we have **kept your interest** and provided a **clear and comprehensive overview** of the **diverse world of IGA solutions** — from

the **perspective of an SAP consulting firm.**

**about the auto**



[Hendrik Winkler](#) is a partner at **consiness** and the lead architect for Identity and Access Management solutions. He draws on extensive expertise in **SAP ABAP, GRC, cloud technologies, and SAP Identity Management**. With more than ten years of experience in the IT industry, he has specialized in the development and implementation of complex **IAM systems**, always keeping a close eye on **security, usability, and compliance**.